

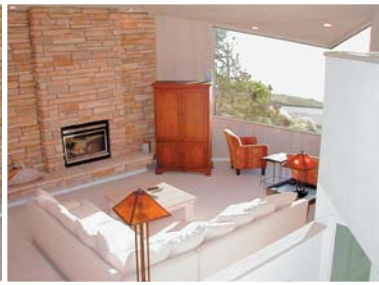
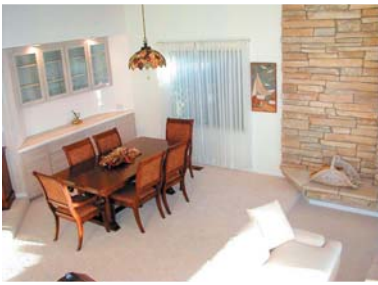


Dennis and
Kathleen
Erba

Expansive White Water Views

**Reduced to
\$995,000**

This James McCalligan designed home in Bodega Harbour features an open floor plan, vaulted ceilings, tile countertops, and expansive views of white water, rock out-croppings, and superb sunsets.



*Three bedrooms
Two and a half baths
2,312 square feet
Built 1989
6,534 square foot lot
918 Seaeagle Loop
Bodega Bay*

**COLDWELL
BANKER**

COAST PROPERTIES

*Dennis and Kathleen Erba
555 Highway One
Bodega Bay, CA 94923
800.875.2201 x222
erba@inreach.com
www.ilovebodegabay.com*

Sold!
*Listed and sold
by Coast Properties
Selling price \$995,000
249 DOM*

www.bodegabayhomes.com

MLS# 20324142 4/202004

If your property is listed with a real estate broker, please disregard. It is not our intention to solicit the offerings of other real estate brokers. We are happy to work with them and cooperate fully. © 2003 Coldwell Banker Real Estate Corporation. ®, TM and SM are licensed trademarks to Coldwell Banker Real Estate Corporation. An Equal Opportunity Company. Equal Housing Opportunity. Each Office Is Independently Owned And Operated.